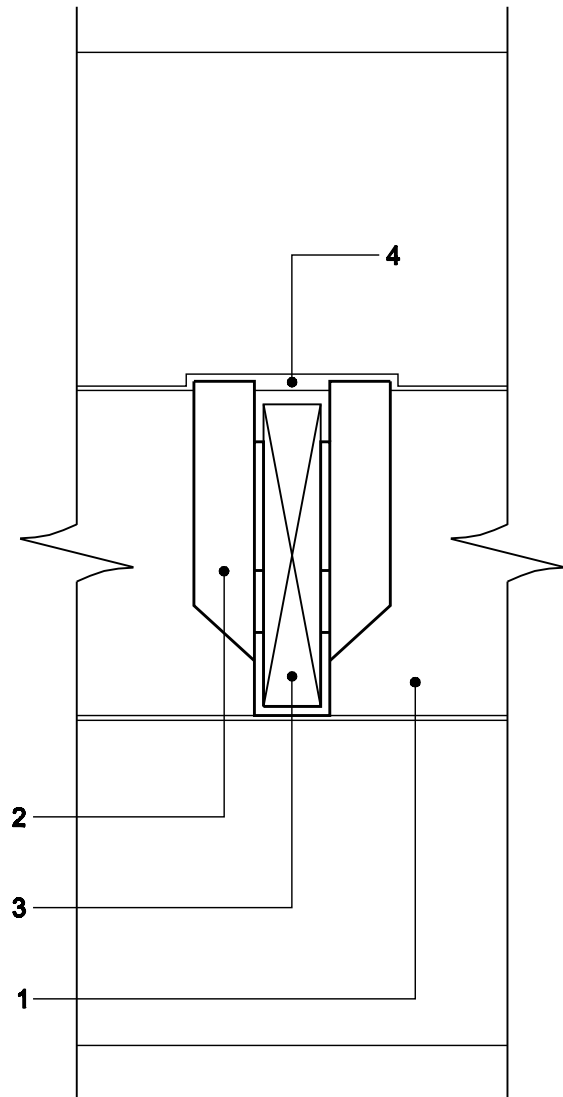
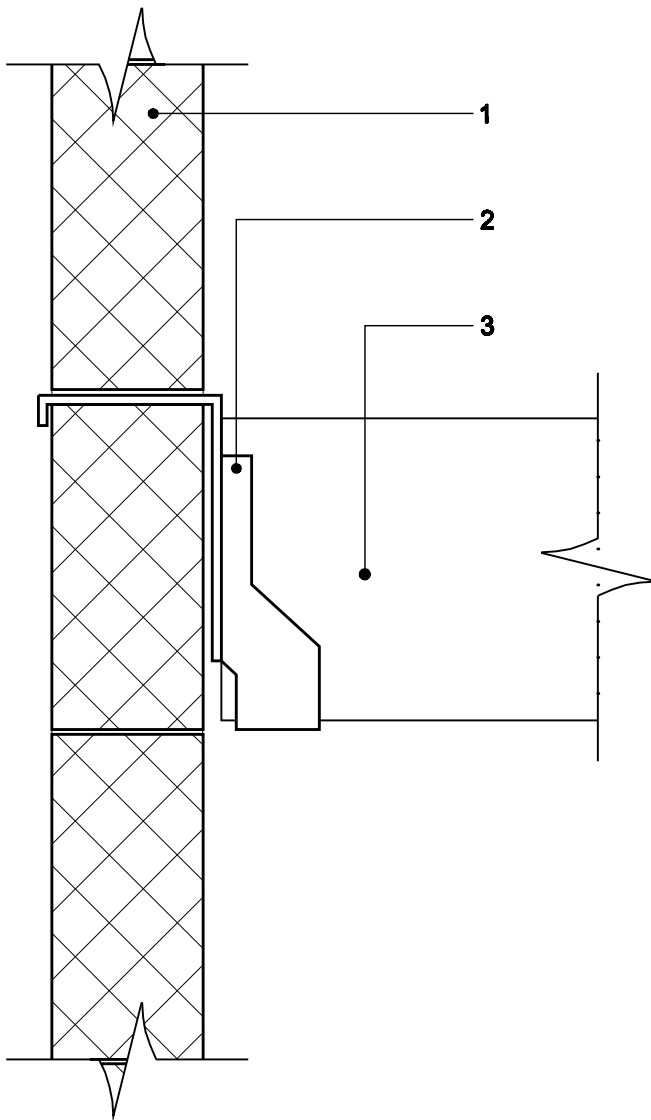


KEY

- 1. 100mm Quinn Lite Aircrete blockwork
- 2. Joist Hanger to B.S. 6178 1990
- 3. Floor Joist
- 4. Recess to accommodate joist hanger

NOTE

When using Quinn Lite Thin Joint Aircrete blockwork, the joist hanger should be placed on top of the block work surface as indicated below and the next course of blockwork should be recessed to accommodate the hanger



PROJECT	DRAWING TITLE Quinn lite Blocks and Joist Hangers	DRAWING NO.	REVISION
copyright© The information is supplied in good faith and no liability can be accepted for any loss or damage resulting from use.	QUINN REF QL-TD-009	DATE	SCALE 1.5
QUINN group	Quinn Group, Head Office, Derrylin, Co. Fermanagh, BT92 9AU Tel:+44 (0) 28 6774 8866 Fax: +44 (0) 28 6774 8800 Email: General Enquires: info@quinn-group.com Technical Enquires: technical@quinn-group.com		