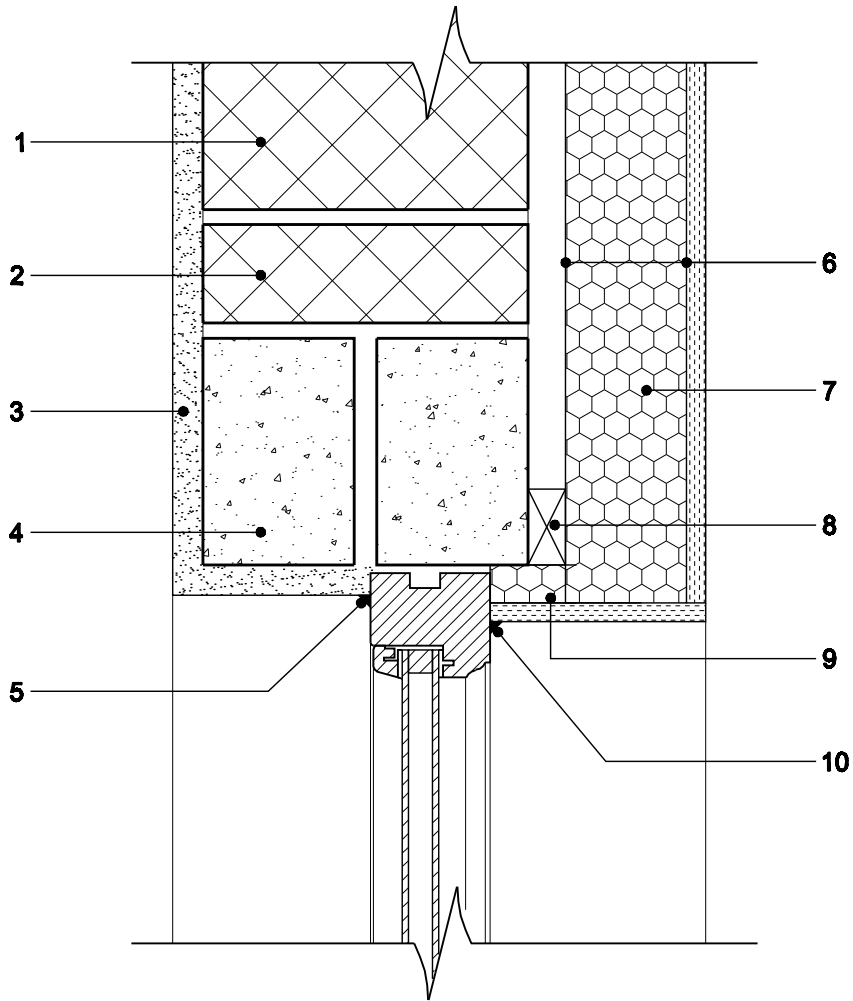


KEY

- 1. 215mm Quinn Lite B5 blockwork
- 2. Quinn Lite coursing unit
- 3. Approved External Render
- 4. Concrete lintel
- 5. Mastic seal
- 6. Vapour control layer
- 7. 80/12.5 Quinn Laminate QL board
- 8. Timber batten
- 9. 25/12.5 Quinn Laminate QL board
- 10. Mastic Seal



PROJECT	DRAWING TITLE Concrete Lintel Detail (Solid Wall Construction)	DRAWING NO.	REVISION
copyright© The information is supplied in good faith and no liability can be accepted for any loss or damage resulting from use.	QUINN REF QL-TD-015	DATE	SCALE 1.5
QUINN group	Quinn Group, Head Office, Derrylin, Co. Fermanagh, BT92 9AU Tel: +44 (0) 28 6774 8866 Fax: +44 (0) 28 6774 8800 Email: General Enquires: info@quinn-group.com Technical Enquires: technical@quinn-group.com		