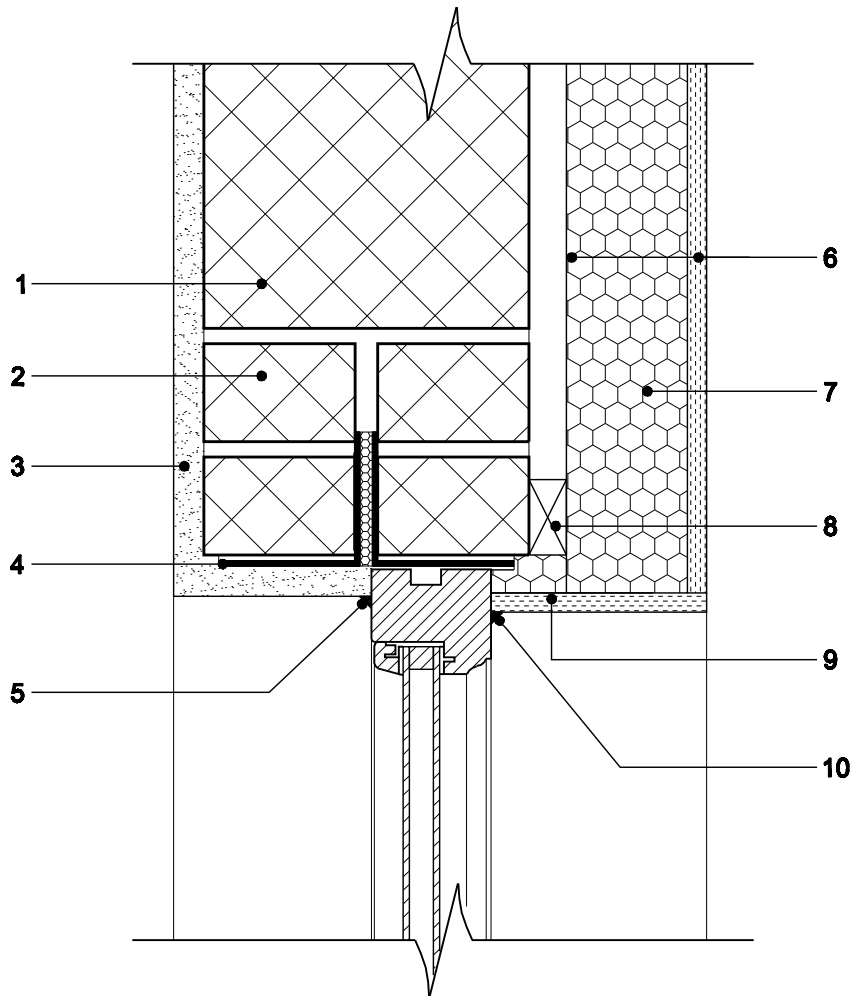


KEY

1. 215mm Quinn Lite B5 blockwork
2. Quinn Lite coursing unit
3. Approved External Render
4. Thermally broken proprietary steel lintel
5. Mastic seal
6. Vapour control layer
7. 80/12.5 Quinn Laminat QL board
8. Timbar batten
9. 25/12.5 Quinn Laminat QL board
10. Mastic seal



PROJECT	DRAWING TITLE Concrete Lintel Detail (Solid Wall Construction)	DRAWING NO.	REVISION
copyright© The information is supplied in good faith and no liability can be accepted for any loss or damage resulting from use.	QUINN REF QL-TD-016	DATE	SCALE 1.5