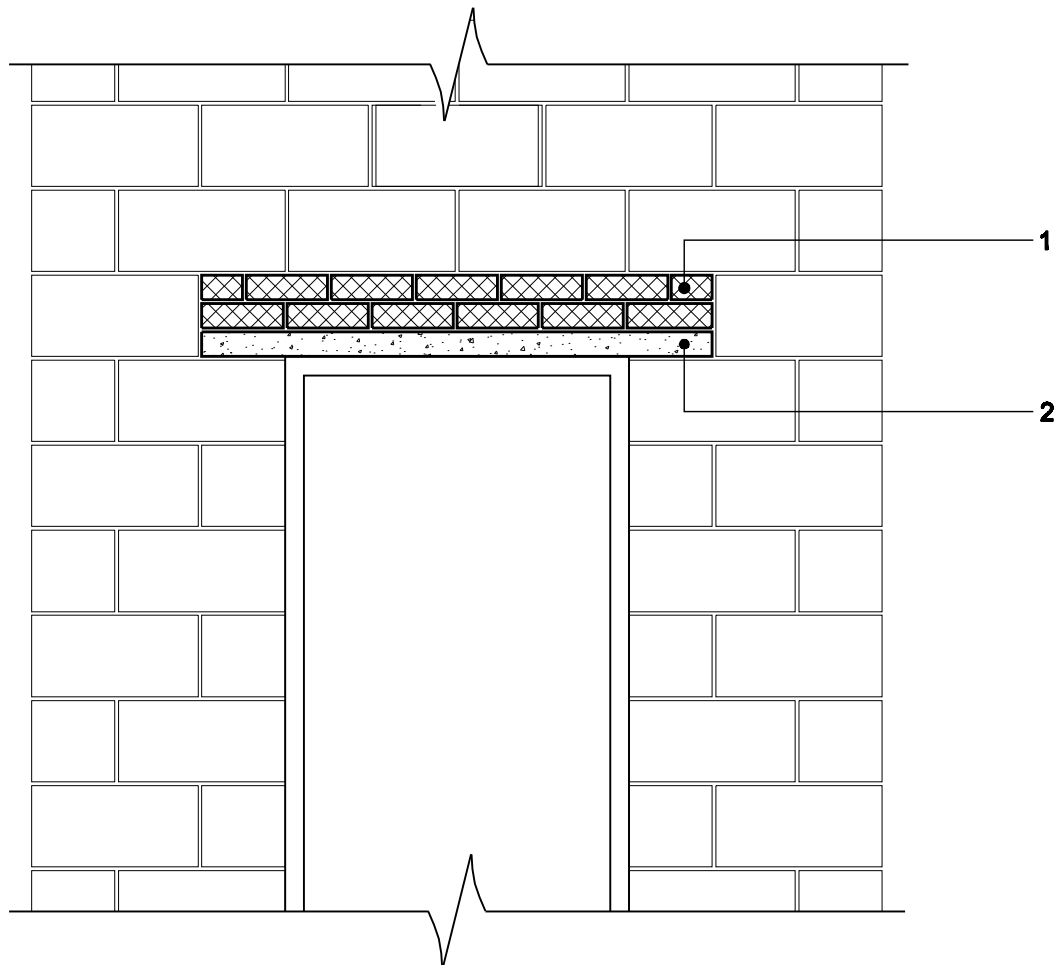


**KEY**

1. Coursing units
2. Concrete lintel

**NOTE**

Quinn Lite coursing units of the same strength as Quinn Lite blocks can be used to reach correct coursing levels around window and door openings, around steel beams or timber joists etc.



<b>PROJECT</b>	<b>DRAWING TITLE</b> Quinn Lite Coursing Units	<b>DRAWING NO.</b>	<b>REVISION</b>
copyright© The information is supplied in good faith and no liability can be accepted for any loss or damage resulting from use.	<b>QUINN REF</b> QL-TD-024	<b>DATE</b>	<b>SCALE</b> 1.20
<b>QUINN</b> group	Quinn Group, Head Office, Derrylin, Co. Fermanagh, BT92 9AU Tel:+44 (0) 28 6774 8866 Fax: +44 (0) 28 6774 8800 Email: General Enquires: info@quinn-group.com Technical Enquires: technical@quinn-group.com		