

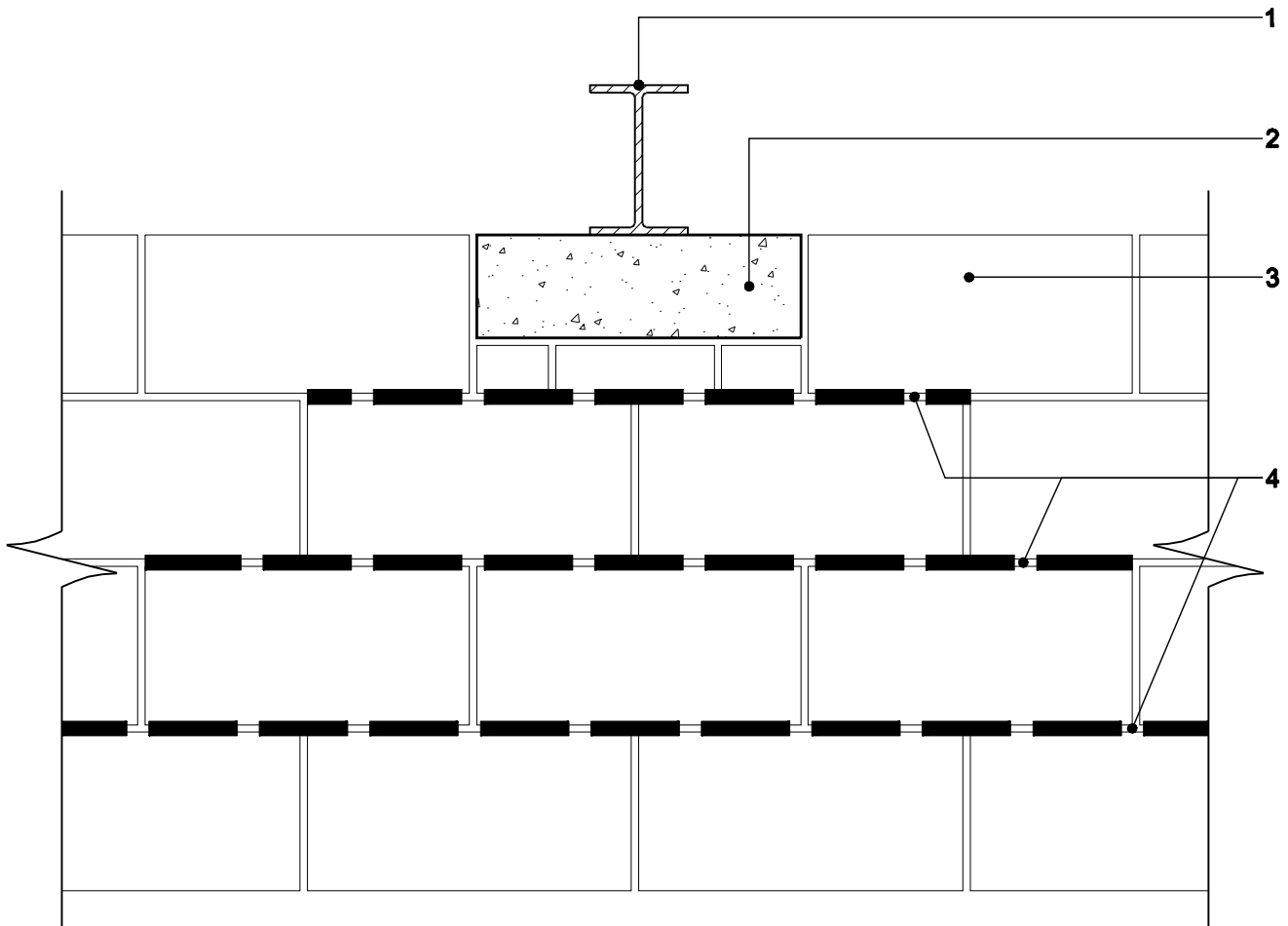
KEY

- 1. Steel beam
- 2. Concrete Padstone
- 3. Quinn Lite B5 blockwork
- 4. Bed joint reinforcement

NOTE

Where bearing stress under steel beams or lintels is in excess of permissible limits a concrete padstone or concrete spreader should be used. Cold bridging should be avoided by using additional insulation at padstone.

Lintels should always bear onto full blocks and not onto coursing units or off cuts of blocks. Both steel and concrete lintels are suitable for Aircrete blockwork and should comply with BS 5977 Lintels Part 2 1983. Lintels should have min 100mm bearing where opening is 1.2m or less and min 150mm bearing where opening is greater than 1.2m.



PROJECT	DRAWING TITLE Reinforcements Joints below Concrete Padstones	DRAWING NO.	REVISION
copyright© The information is supplied in good faith and no liability can be accepted for any loss or damage resulting from use.	QUINN REF QL-TD-025	DATE	SCALE 1.10
QUINN group	Quinn Group, Head Office, Derrylin, Co. Fermanagh, BT92 9AU Tel: +44 (0) 28 6774 8866 Fax: +44 (0) 28 6774 8800 Email: General Enquires: info@quinn-group.com Technical Enquires: technical@quinn-group.com		